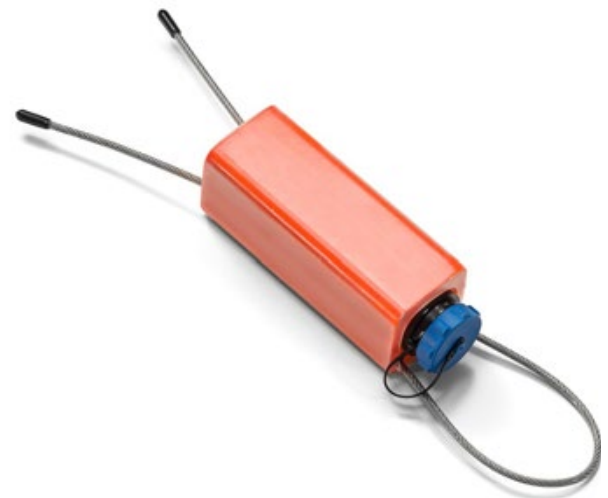


# MiniNode

The MiniNode by Sybet International is a lightweight, portable wireless radio node designed for cave rescue operations and speleology. It enables efficient voice and data communication in challenging underground environments, forming part of a mesh network of +100 nodes.

The device is engineered for ease of deployment, mobility, and ruggedness, making it ideal for exploration teams seeking reliable, cost-effective communication solutions.



# Technical specification

For a detailed overview of the product’s capabilities, please see the key features listed below. These highlights will provide you with a comprehensive understanding of the advanced functionalities and benefits that our product offers.

## SPECIFICATION

FEATURE	DESCRIPTION
Device Type	Portable wireless mesh radio node
Application	Cave rescue, speleology, underground exploration
Weight	250g (0.55 lbs)
Battery Life	Up to 3 days continuous operation
Power Supply	Internal rechargeable battery
Connectivity	Wireless mesh (no fiber optic/wired connections)
Network Capacity	+100 nodes
Protection	IP67 (dust and moisture resistant)
Communication	Voice and data transmission
Operation	Simple power-on activation, LED status indicators